

Floor Plan | G/F



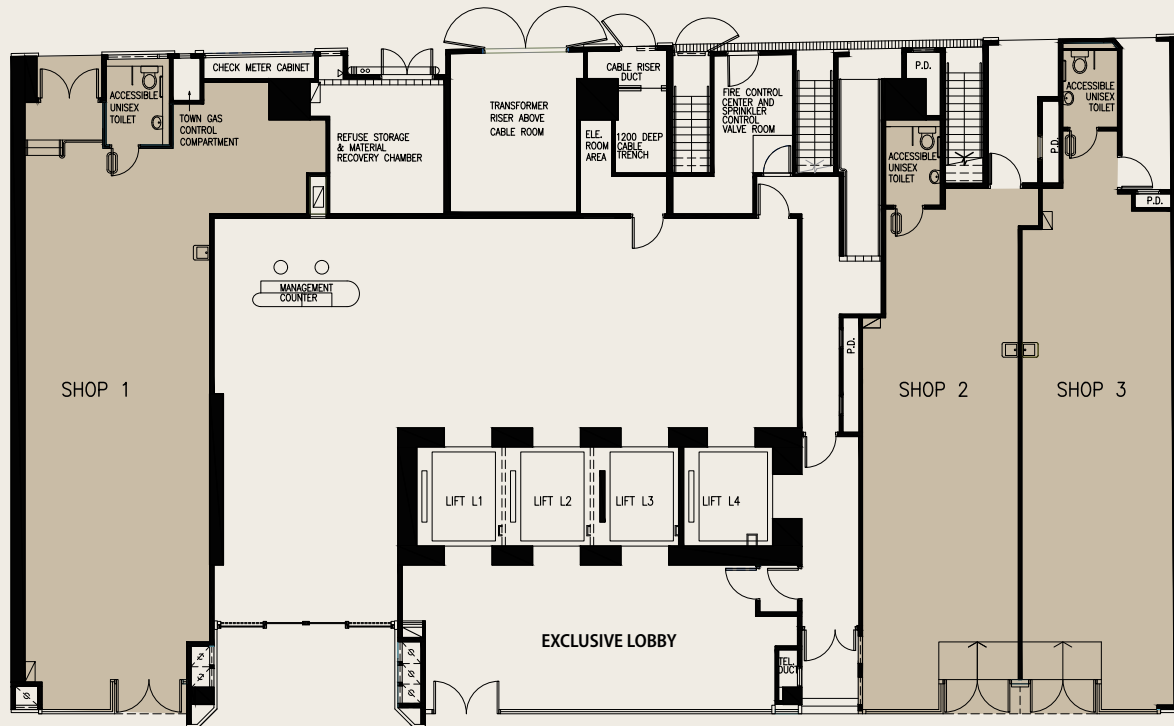
Prospective view of Ashley Road

Shops & Lobby

Exclusive lobby for day procedure centre or anchor tenant

Shop 1 Area (Gross): approx. 1,796 s.f. ,Shop 2 Area (Gross): approx. 1,160 s.f.

Shop 3 Area (Gross): approx. 1,212 s.f.



Floor	Approx. Floor Area (Gross) for Lease & Usage	Notes
23/F	5,461 s.f. per floor	Clinic or office
22/F		
21/F		
20/F		
19/F		
18/F		
17/F		
16/F	5,461 s.f. per floor	Clinic or office
15/F		
12/F		
11/F		
10/F	5,461 s.f. per floor	Clinic or office
9/F		
8/F		
7/F	5,461 s.f. per floor	Clinic or office
6/F		
5/F	5,713 s.f.	
3/F		Podium Garden
2/F	8,064 s.f.	DPC/ Clinic/ Imaging Center/ Office
1/F		E&M
G/F		Lobby & Shops

*(13/F, 14/F are omitted)

The developer reserves the right to make modification and changes according to the actual circumstances without prior notice. The plan is for indication and reference only, not to scale and subject to change.

Floor Plan | 2/F

Day Procedure Centre / Office

Floor Area (Gross): approx. 8,064 s.f.



Perspective view of typical lift lobby

Approx. Floor Area (Gross) for Lease & Usage	
23/F	5,461 s.f. per floor
22/F	
21/F	
20/F	
19/F	
18/F	
17/F	5,461 s.f. per floor
16/F	
15/F	
12/F	
11/F	5,461 s.f. per floor
10/F	
9/F	
8/F	
7/F	5,713 s.f.
6/F	
5/F	8,064 s.f.
3/F	
2/F	8,064 s.f.
1/F	
G/F	

Clinic or office

- Podium Garden
- DPC/ Clinic/ Imaging Center/ Office
- E&M
- Lobby & Shops

*(13/F, 14/F are omitted)

Blind-off louver (32m x 0.4m)



The developer reserves the right to make modification and changes according to the actual circumstances without prior notice. The plan is for indication and reference only, not to scale and subject to change.

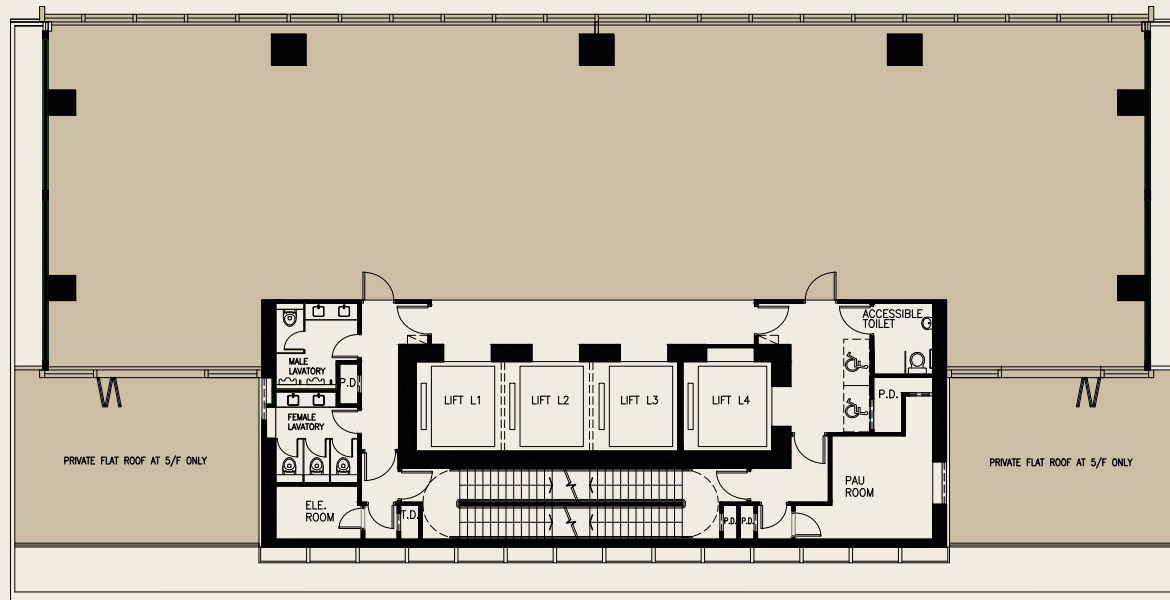
Floor Plan | 5/F

Office / Clinic

Floor Area (Gross): approx 5,713 s.f.



Prospective view of 5/F flat roof



		Approx. Floor Area (Gross) for Lease & Usage	
23/F	5,461 s.f. per floor		
22/F			
21/F			
20/F			
19/F			
18/F	5,461 s.f. per floor		Clinic or office
17/F			
16/F			
15/F			
12/F	5,461 s.f. per floor		
11/F			
10/F			
9/F	5,461 s.f. per floor		
8/F			
7/F			
6/F	5,713 s.f.		
5/F			
3/F			Podium Garden
2/F	8,064 s.f.		DPC/ Clinic/ Imaging Center/ Office
1/F			E&M
G/F			Lobby & Shops

*(13/F, 14/F are omitted)

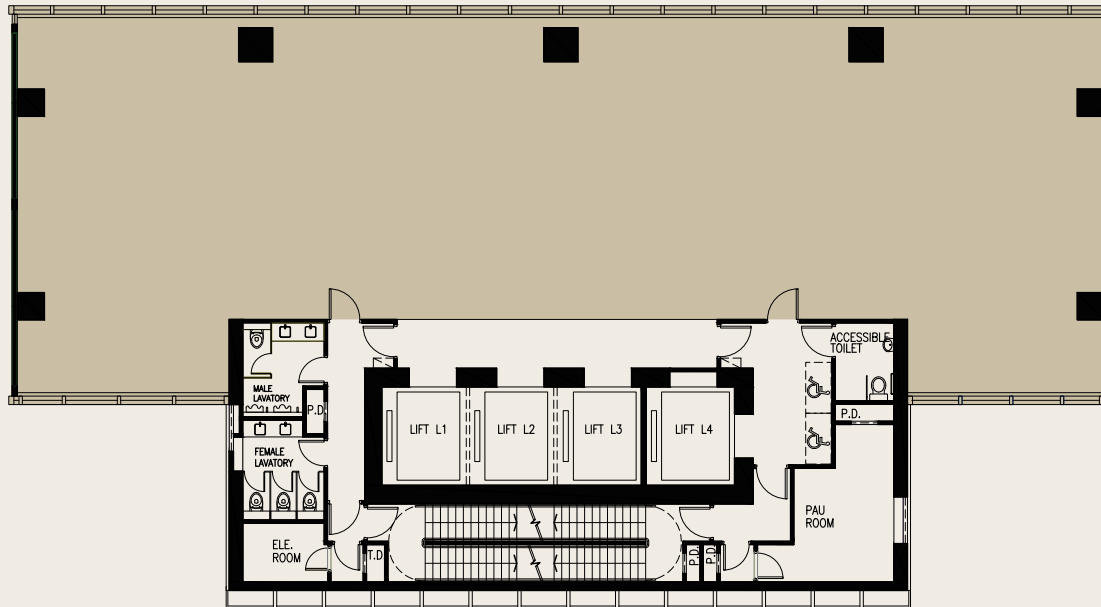
The developer reserves the right to make modification and changes according to the actual circumstances without prior notice. The plan is for indication and reference only, not to scale and subject to change.



Floor Plan | 6/F-9/F

Office / Clinic

Floor Area (Gross): approx. 5,461 s.f.



		Approx. Floor Area (Gross) for Lease & Usage	
23/F	5,461 s.f. per floor		
22/F			
21/F			
20/F			
19/F			
18/F			
17/F			
16/F	5,461 s.f. per floor		Clinic or office
15/F			
12/F			
11/F			
10/F	5,461 s.f. per floor		
9/F			
8/F			
7/F			
6/F	5,713 s.f.		
5/F			
3/F			• Podium Garden
2/F	8,064 s.f.		• DPC/ Clinic/ Imaging Center/ Office
1/F			• E&M
G/F			• Lobby & Shops

*(13/F, 14/F are omitted)

The developer reserves the right to make modification and changes according to the actual circumstances without prior notice. The plan is for indication and reference only, not to scale and subject to change.

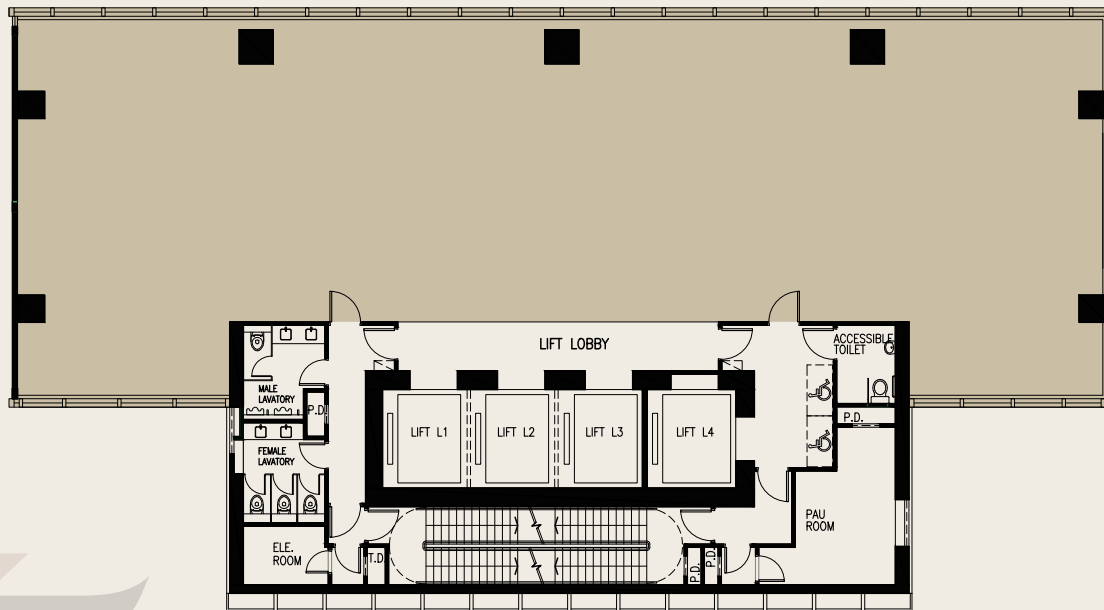
Floor Plan | 10/F-16/F (13/F & 14/F are omitted)



Prospective view of 16/F

Office / Clinic

Floor Area (Gross): approx. 5,461 s.f.



Blind-off louver
(11m x 0.4m)

Approx. Floor Area (Gross) for Lease & Usage		
23/F	5,461 s.f. per floor	Clinic or office
22/F		
21/F		
20/F		
19/F		
18/F		
17/F		
16/F	5,461 s.f. per floor	
15/F		
12/F		
11/F		
10/F	5,461 s.f. per floor	
9/F		
8/F		
7/F	5,461 s.f. per floor	
6/F		
5/F	5,713 s.f.	
3/F		● Podium Garden
2/F	8,064 s.f.	● DPC/ Clinic/ Imaging Center/ Office
1/F		● E&M
G/F		● Lobby & Shops

*(13/F, 14/F are omitted)

The developer reserves the right to make modification and changes according to the actual circumstances without prior notice.
The plan is for indication and reference only, not to scale and subject to change.

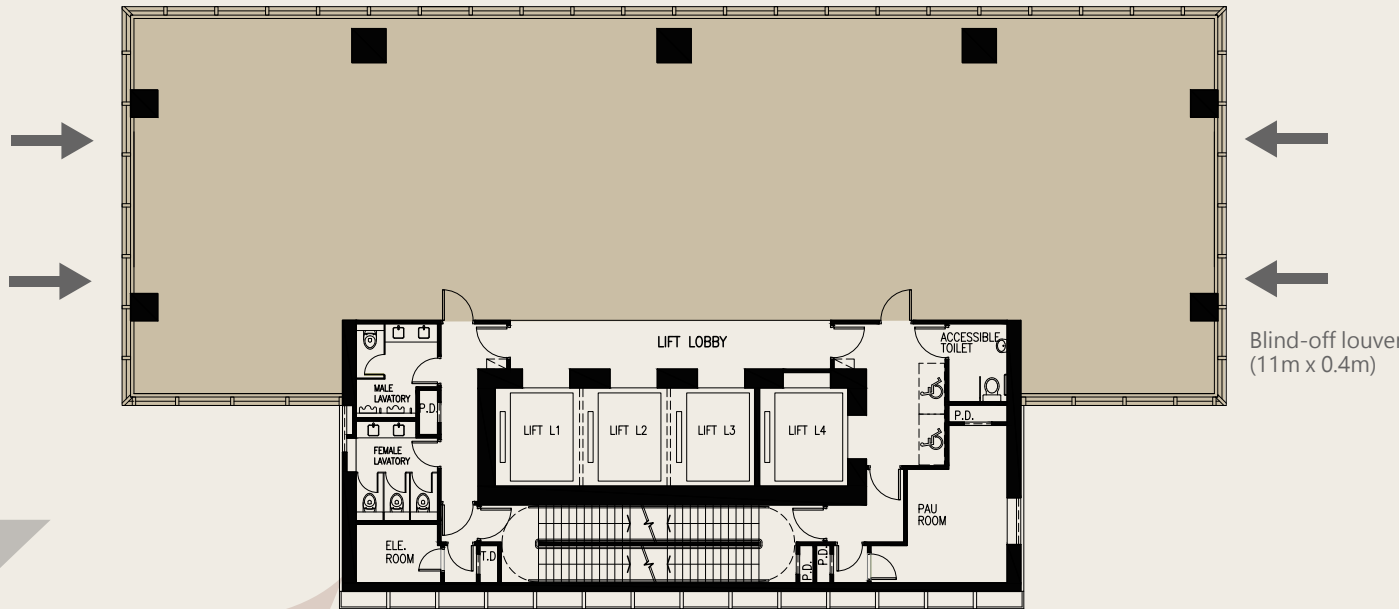
Floor Plan | 17/F-23/F

Office / Clinic

Floor Area (Gross): approx. 5,461 s.f.



Prospective view of 21/F



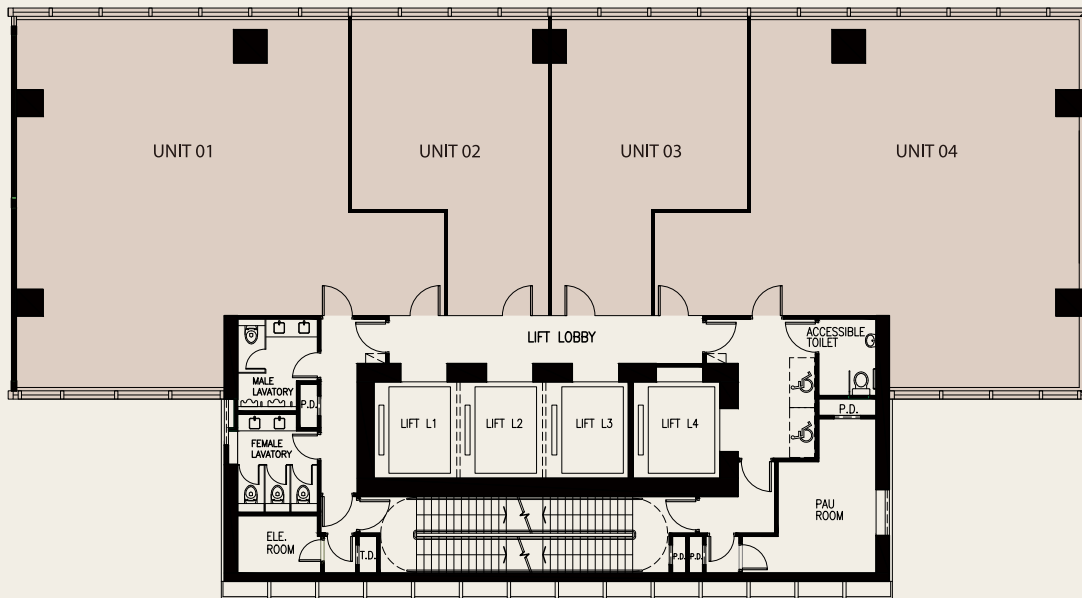
Blind-off louver
(11m x 0.4m)

Approx. Floor Area (Gross) for Lease & Usage		
23/F	5,461 s.f. per floor	
22/F		
21/F		
20/F		
19/F		
18/F	5,461 s.f. per floor	Clinic or office
17/F		
16/F		
15/F	5,461 s.f. per floor	
12/F		
11/F		
10/F		
9/F	5,461 s.f. per floor	
8/F		
7/F		
6/F	5,713 s.f.	
5/F		
3/F		• Podium Garden
2/F	8,064 s.f.	• DPC/ Clinic/ Imaging Center/ Office
1/F		• E&M
G/F		• Lobby & Shops

* (13/F, 14/F are omitted)

The developer reserves the right to make modification and changes according to the actual circumstances without prior notice. The plan is for indication and reference only, not to scale and subject to change.

Standard Subdivision Plan | 7/F, 11-12/F, 16/F



GFA in sq.ft. gross				
Premises	Plan 1	Plan 2	Plan 3	Plan 4
Unit 01	1,985	1,985	2,739	3,493
Unit 02	1,508	754		
Unit 03		754	754	
Unit 04	1,968	1,968	1,968	1,968
Total	5,461	5,461	5,461	5,461

The developer reserves the right to make modification and changes according to the actual circumstances without prior notice. The plan is for indication and reference only, not to scale and subject to change.